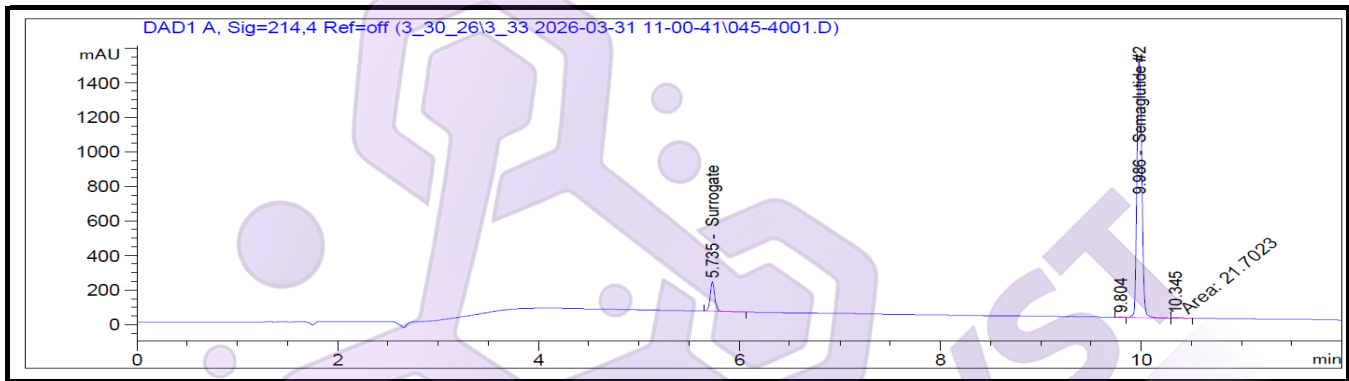


Certificate of Analysis

Semaglutide 10 mg

Report To:
Amethyst Biotech

Compound: Semaglutide
Amount: 10 mg
Laboratory ID: V260325-23 006
Lot Number: 202603-SMA10
Date Reported: 4/20/2026



Analysis	Method	Result
Chromatographic Purity	HPLC-UV/VIS	99.47% + 0.18%
Assay	HPLC-UV/VIS	11.22 mg



Report By: Dustin Newman, Laboratory Director on 4/20/2026

Approved By: Tori Johnson, Operations Manager on 4/20/2026

Please consult A2LA Certificate #6377.01.01 for a list of accredited tests. Samples were received in acceptable condition. The result(s) in this report relate only to the portion of the sample(s) tested. All analyses were performed consistent with the Vanguard Laboratory Quality Management System. Vanguard Laboratory and its staff did not observe or participate in the sample selection process, and cannot confirm the authenticity of the sample or its representativeness of the associated lot/batch.



Vanguard Laboratory
 2635 Parkmont Ln
 Olympia, Wa 98502
 360-967-7010

Certificate of Analysis

Semaglutide 10 mg

Report To:
Amethyst Biotech

Compound: Semaglutide
 Amount: 10 mg
 Laboratory ID: V260325-13 006
 Lot Number: 202603-SMA10
 Date Reported: 4/20/2026

Analyte	Method	LOQ (ppm)	Result (ppm)
Arsenic (As)	ICP-MS	0.01	ND
Cadmium (Cd)	ICP-MS	0.01	ND
Lead (Pb)	ICP-MS	0.02	ND
Mercury (Hg)	ICP-MS	0.005	ND

Run ID: 260401

Analysis	Method	Result
Endotoxins	LAL	Pass - <5.00 EU/mg*
Sterility	USP <71>	Pass - No Growth Detected

*Pass/Fail criteria based on the USP/FDA threshold of 5 EU/kg (350 EU total for a 70 kg adult)

Report By: Dustin Newman, Laboratory Director on 4/20/2026

Approved By: Tori Johnson, Operations Manager on 4/20/2026

ND: Non-Detect

LOD: Limit of Quantification



Please consult A2LA Certificate #6377.01.01 for a list of accredited tests. Samples were received in acceptable condition. The result(s) in this report relate only to the portion of the sample(s) tested. All analyses were performed consistent with the Vanguard Laboratory Quality Management System. Vanguard Laboratory and its staff did not observe or participate in the sample selection process, and cannot confirm the authenticity of the sample or its representativeness of the associated lot/batch.